

SPLATE **SPZ170 / SPZ270**

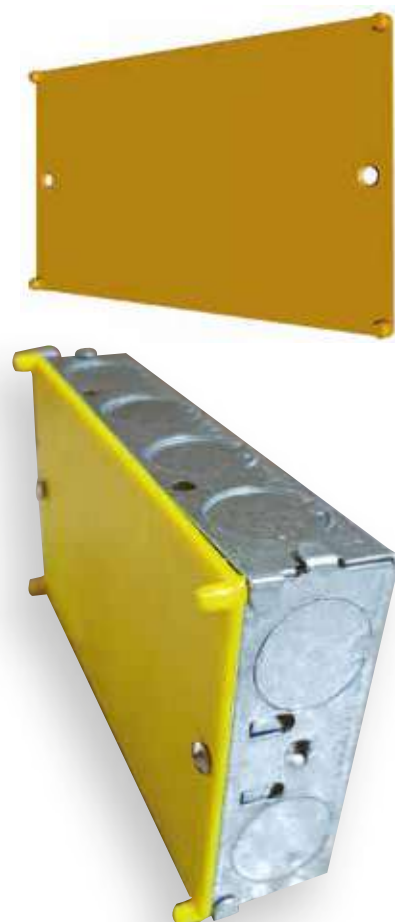


SplateZ is a new product from Sockitz that allows electricians to protect their installation after the first fix.

Ideal for new build and new installations where the 1st fix of the electrical installation is complete prior to plastering and other trades. The SplateZ will protect the 1 gang and 2 gang back boxes from plaster ingress, keeping the boxes and cables protected from damage and debris.

With its unique design, SplateZ also allow the plastering to be completed faster and easier by marking the plasterboard ready for cutting around electrical boxes.

- Saves time and money.
- Safely protects the electrical back box and cables.
- The location marker pins save time for the plasterer and provide accurate marking to cut out the plasterboard and allow fitting over the electrical switches and sockets.
- Prevents the ingress of plaster and paint etc. into the 1st fixed back boxes.
- Easy to fit and an inexpensive way to protect the 1st fix electrical installation.
- BS5733 certified electrical product made to BS4662 specification.
- May also be used with or without Sockitz Safety Shields to protect open back boxes prior to plastering, tiling and painting.
- Made in Britain.
- Two sizes are available for 1 gang and 2 gang electrical BS4662 back boxes.



List Number	Description
SPZ170	1 Gang
SPZ270	2 Gang

View our full product range at: www.sockitz.com

Step by step guide to using Sockitz SPLATEZ SPZ 170 / 270

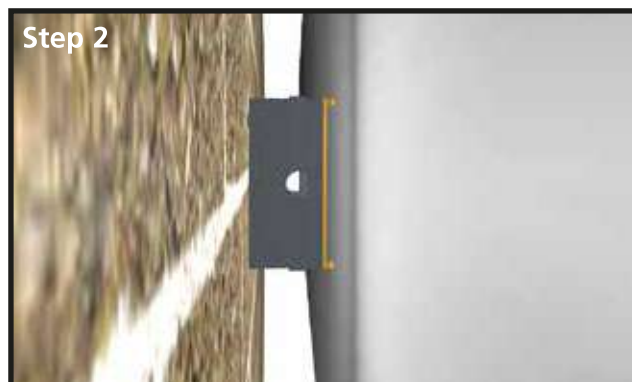
All electrical installation work should be carried out by qualified competent persons to BS7671 IEE Wiring Regulations. Always ensure the electricity supply is isolated prior to fitting and removing the Sockitz products.

Sockitz SplateZ can be used with or without Sockitz Reusable and Disposable Safety Shields.



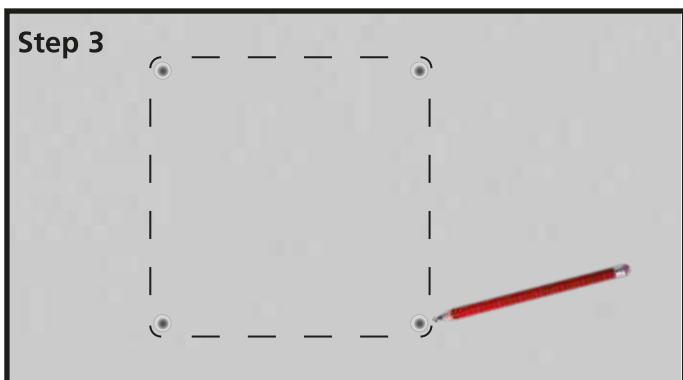
Step 1

Fit Sockitz SplateZ to the back box using the fixing screws.



Step 2

Push the plasterboard against the Sockitz SplateZ marker pins.



Step 3

Join the marks and cut out the plaster to create a precise recess.



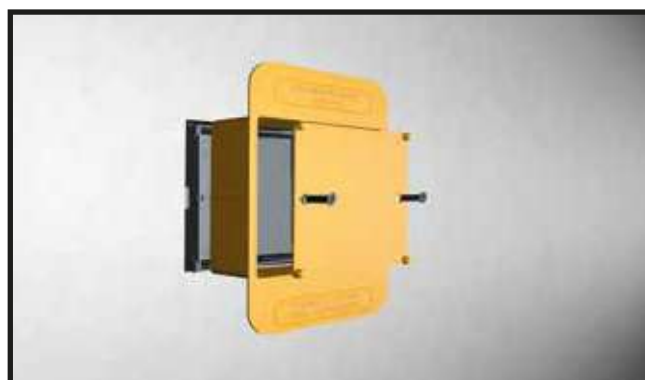
Step 4

Fit the to plasterboard to the wall.



Step 5

Plaster, paint or tile and prevent excess moisture and plaster entering the electrical fixing.



For the perfect finish, Splatez may also be used with Sockitz Reusable and Disposable Safety Shields.

For more information or to purchase Sockitz products, visit our website or contact your electrical wholesaler.