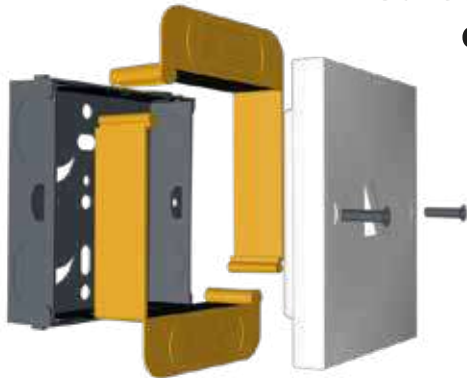


(SSR) REUSABLE SAFETY SHIELDS



Safety Shield is a new product that allows electricians to complete first and second fix at the same time.

Ideal for refurbishment and rewire contracts where it's necessary to get the power switched back on and help keep the installation safe and fully functional while waiting for other trades to complete their work. For example, the refurbishment of a kitchen will require the first fix electrical installation some time before the plastering is repaired and the finishing touches such as tiling and painting are completed. So what will the customer do for power and lighting in the meantime? **SAFETYSHIELD!**

- Saves time and money.
- Fits between backbox and accessory.
- Allows electrical power to be returned safely before building work is complete. (Fig.1)
- Electrician can complete first and second fix at the same time, no need to return to site after other trades have completed their work.
- Provides working space for plastering, plaster patching, tiling, wallpapering and paintwork. (Fig.2)
- A shower cap or plastic bag should be used to keep the accessory clean and free from dust while work is completed.
- Provides a frame for plastering, patching and tiling and prevents the ingress of foreign bodies such as grout and plaster.
- Provides a trim border for tiling, wallpapering and a "cutting in" edge for paintwork.
- A range of sizes are available to cater for single and twin accessories and different depths for wall finish i.e. plaster, tile, wallpaper, paint etc.



Fig.1



Fig.2

List Number	Description	Depth
SSR170	1 Gang	30mm
SSR270	2 Gang	30mm

View our full product range at: www.sockitz.com

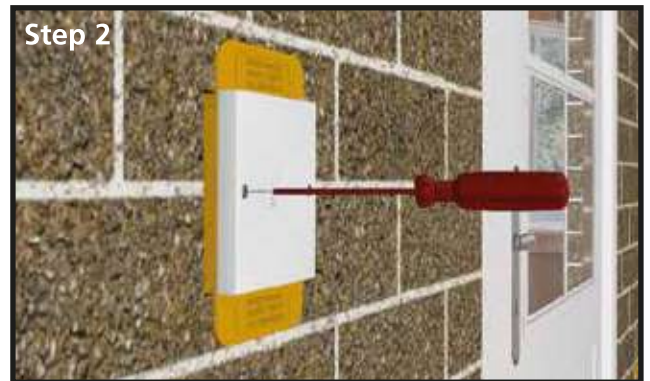
Step by step guide to using Sockitz SSR Reusable Safety Shields.

All electrical installation work should be carried out by qualified competent persons to BS7671 IEE Wiring Regulations. Always ensure the electricity supply is isolated prior to fitting and removing the safety shields.

Watch the Installation video online at: www.sockitz.com



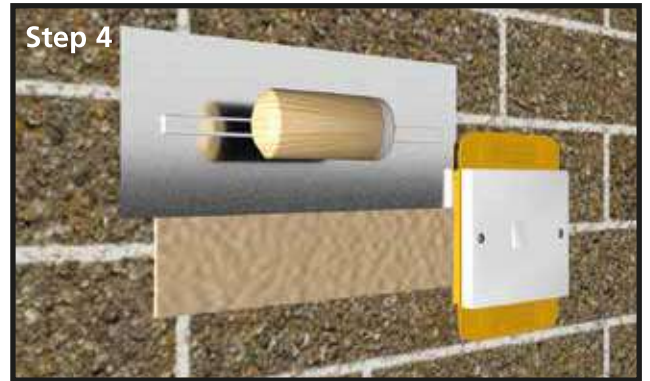
Step 1
First fix - unscrew the electrical fitting and clip the Safety Shield together so that the locating pins slide into the lugs.



Step 2
Second fix - Insert the Safety Shield into the back box, refix the electrical fitting and complete safety tests.



Step 3
The electrical supply is safely maintained during the remaining building work and the electrician can leave site.



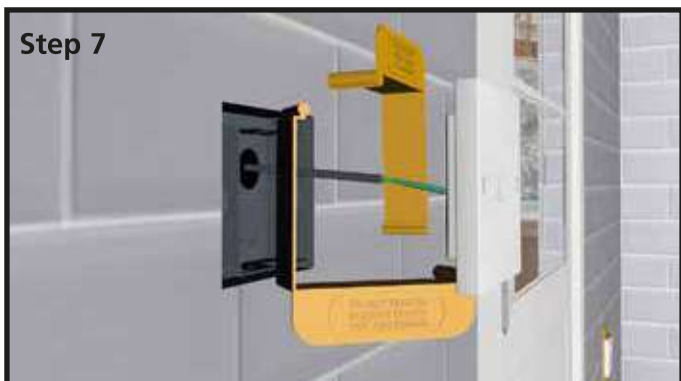
Step 4
Plaster, allowing a clean edge and prevent excess moisture and plaster entering the electrical fixing.



Step 5
Paint and prevent excess coming into contact with the electrical fitting to ensure a perfect finish.



Step 6
Tile with a clean edge to work from. The Safety Shield also ensures sufficient space is left to recess the fitting.



Step 7
Remove the fixing screws, unclip and remove the Safety Shield and reuse on your next electrical installation.



Step 8
Re-install the fixing screws and complete final electrical safety tests and checks.

For more information or to purchase Sockitz products, visit our website or contact your electrical wholesaler.